



# 2022 Annual Report

# MESSAGE FROM LIFESPAN RESOURCES' CEO & BOARD PRESIDENT



*Lora Clark*  
Lora Clark  
Chief Executive Officer



*Annette J Roberts*  
Annette Roberts  
President, Board of Directors

## 2022: Approaching our 50th Year!

As 2022 progressed, we began planning for our 50th Anniversary celebration in 2023. Our 50th Anniversary Planning Committee began meeting mid-year and is headed up by Lucy Koesters, our Chief Business Development Officer. We are very grateful to these committee members for their time, interest, research and planning:

Angela Marino  
Annette Roberts  
Barbara Crecelius  
Beth Preher  
Earlene Bennett  
Lora Clark  
Lucy Koesters  
Melissa Richardson  
Patty Cress  
Sherry Cookson  
Tonya Fischer  
Vern Eswine

The excitement is building for this special year in 2023. The committee is working on producing a historical documentary video, a television campaign, newspaper ads, social media blitz (Look for: 50 Reasons to Love LifeSpan Resources) and a celebration event in May where elected and state officials, and local dignitaries will be invited. We can't wait to share our history and all the good work our agency has performed for our community in the past 50 years.

This year saw a return to a "new normal" post pandemic. Our congregate programs with daily hot lunches and socialization activities ramped back up to nearly pre-pandemic levels. Our case managers returned to in-person, in-home visits. We also returned to our larger in-person events such as Senior Games and Voice and Vino which hosted 700 attendees at Caesars Southern Indiana in October. It was our most successful gala in history, raising \$150,000!

Our staff, like many others in the United States, are finding that working from home or hybrid in-office/work-from-home schedules fit best. With many of our staff converting to on-going work-from-home arrangements, we were able to consolidate more of our staffs from remote locations.

We have so much to be proud of at LifeSpan Resources – our 50 years of service to southern Indiana first and foremost. We are the only organization in our area helping older adults and individuals with disabilities to live independently.

Whatever the need is – whether it's help at home, meals on wheels, transportation, home modifications, caregiver support or more – we are here to make those connections to resources.

We've been here for 50 years – and we'll be here for 50 more.





## BOARD OF DIRECTORS



Annette Roberts  
President  
At-Large



Doug Drake  
Vice President  
Clark County



Mary Alice Fortener  
Secretary  
Clark County  
*Through June 2022*



Chris Schwaniger  
Treasurer  
Harrison County



Dr. Deepak Azad  
At-Large



Mayor Jeff Gahan  
Floyd County



Barbara Crecelius  
At-Large



Ishmael White  
Scott County



Tonya Fischer  
Secretary  
Floyd County



James Goldman  
Harrison County



Rev. Tony Toran  
At-Large



Lynn Reker  
Clark County

## ADVISORY COUNCIL



Cheryl Fisher  
President



State Rep. Ed Clere  
Vice President  
*Through June 2022*



Pamela Clark  
Secretary



Tara Avis  
*Through Oct. 2022*



Diane Clark



Rev. Dr. Albert L. Cole



Leslie Curry  
*Through Nov. 2022*



Kristen Troyer Ems



Becky Jaenichen  
*Through Aug. 2022*



Ellen Kelley



Sandra Krekel



Beth Preher  
Vice President



Maureen Robinson

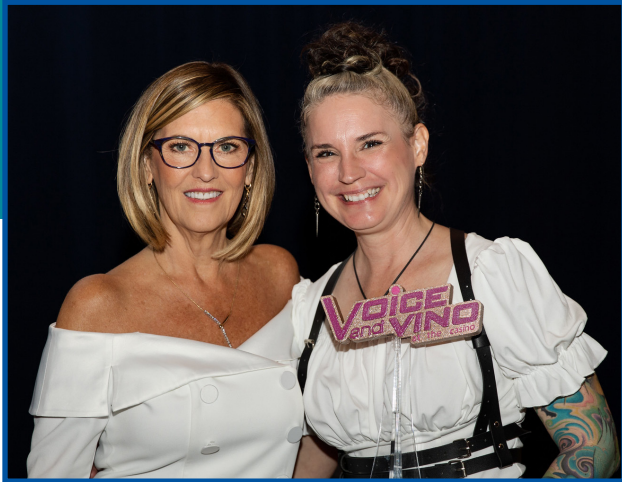


Martina Snyder

## 2022 HIGHLIGHTS FOR LIFESPAN RESOURCES

### Voice and Vino at the Casino: Season Five!

"Season 5" of our premier gala fundraiser was held in-person this year on Tuesday, October 25 at Caesars Southern Indiana with 700+ attendees, entertained by seven fantastic singers and four local celebrity judges. The event was our most successful ever, raising more than \$150,000! Congratulations to this year's winner: Charlestown Mayor Treva Hodges!



### Senior Games

"Surfin' Seniors" participated in the 36th Annual Senior Games. The event was held in-person the week of June 6-10. The theme included everything Hawaiian including skirts, leis, and pineapple door prizes. We added golf and brought back the vendor fair this year. We loved being together with our friends for some fun, friendly (but fierce) competition!



Held our **5th Annual Voice and Vino at the Casino fundraiser** which raised a record of nearly \$150,000 with a packed house of approximately 700 attendees.

Held our **36th Annual Senior Games** (Surfin' Seniors), which was our first full Senior Games since the pandemic. We had 132 participants and raised more than \$30,000.

Added **several new Senior Games Gang events** this year, building up to monthly events. Participation increased from 72 to 94 members.

Senior Game Gang Angel Tree program **delivered 50 holiday boxes** to needy clients in December.

Brought in over **\$270,000 in Grant Allocations**.

Produced New 50th Anniversary Video featuring **50 years of LifeSpan Resources** with archival assets and video interviews.

Collaborated with New Albany Salvation Army to deliver **40 clients a hot Thanksgiving Day meal**. Volunteers from Northside Christian made the deliveries.

Working with IAAAA, Anthem, IU, and Masterson's Catering to implement the Produce for Better Health program in 2023. **Will receive \$160,000 in grant funding to deliver boxes of fresh produce to nutrition clients beginning in 2023.** Project will track health stats of participants to determine the health benefits of adding fresh produce to the diet.



**We provided 1,024 units of evidence-based Health and Wellness Programs.** These include Tai Chi for Arthritis, A Matter of Balance, Active Living Every Day, and Walk with Ease.

Using our American Rescue Plan grant **a robust advertising plan was conducted for COVID vaccine/booster awareness in 2022.** Publications included the News and Tribune, Extol magazine, The Corydon Democrat and Southern Indiana Living.

**Developed new health care partnership with Clark Memorial Hospital** that promotes continuity of care transitions from hospital to home.

In spite of stock market volatility and record unrealized losses, rising fuel costs never seen before, and basically rising costs on everything, **the agency finished State Fiscal Year 22 with \$172K excess Revenue over Expenditures.**

Applied for and was selected as one of only three organizations to work with Spalding University **graduate student to review policies and procedures through a lens of Diversity, Equity and Inclusion.**

We revamped our Longevity Awards program, **presenting each employee who has reached a 5-year increment milestone with \$100 per year and a certificate or plaque.** This also follows well with our Area Pan goal of improving Employee Retention.

**American Rescue Funds have been received and approved to increase the number of caregiver and care recipient clients receiving services.**

Hired additional Field Options Counselor as **long-term services and supports referrals have increased in the Aging and Disability Resource Center.**

Collaboration with Q-Source (Medicare Quality Improvement Organization) **brought Trauma Informed Care and Social Determinants of Health training to case managers and options counselors.**

**Added partnership with Floyd Co YMCA to offer A Matter of Balance.** The Y conducted two 8-week sessions in 2022 and plans to continue in 2023.

**Received \$50,000.00 ARP grant from the City of New Albany for home delivered meals in Floyd Co.**

Continuing our work with Dual Eligible – Special Needs Plans resulting in pro-active referrals for members in nursing homes or have a diagnosis of dementia. **Our rate of beginning care transitions upon D-SNP notifications stands at 88%, above the state AAA standard of 67%.**

Senior Center Project: **Added subcommittee of the Board of Directors and evaluated two new potential locations in Clark Co and made a proposal to the Clarksville Town Council.**

**Added DEI graphics throughout our offices** featuring wall vinyls depicting words of inclusion, puzzle pieces of inclusion and people of all colors, nationalities and abilities.

TV Advertising campaign being planned and produced to air in 2023. **15 and 30 second spots will highlight our services and our 50 years in the community.** Will air on WDRB and local cable stations. First time in history we have produced television spots.

**Planning is well underway for our upcoming invitation only 50th anniversary celebration.**

**Save the date for Thursday, May 11, 2023!**



# PROGRAMS

Fiscal Year 2022 (July 1, 2021 - June 30, 2022)

## ADVOCACY & OUTREACH

We represent senior citizens in many ways in our community through membership in human services organizations and state and national networks. We also sponsor the awesome annual Senior Games and Nursing Home Games, the Golden Hoosier Volunteer Award, Senior Angel Tree Holiday Program, and the Senior Games Gang membership program. Our volunteer Advisory Council acts on legislation that effects the elderly and disabled population and/or the agency and its programs.

132 individuals participated in Senior Games.  
16 Nursing Home Games participants.  
94 Senior Games Gang Members.  
50 Angel Tree Boxes delivered.



## AGING AND DISABILITY RESOURCE CENTER (ADRC)

LifeSpan Resources offers this trusted and FREE local resource where people can turn for unbiased information and referral to a wide array of long term support options. Our trained Options Counselors are available Monday- Friday during business hours – either in person in our main office, by phone or by appointment.

9,196 interactions were made through the ADRC  
792 interactions were for Options Counseling

*I've worked for LifeSpan Resources for about nine years now and I've never worked anywhere where we can do so much to assist people.*  
– Ms. A, Case Manager



Make a referral or get information.



Lifespan Resources is proud to provide information and referrals for our Aging and Disability Resource Center.

Visit [lsr14.org](http://lsr14.org) or call our office and ask to speak to an Options Counselor



*LifeSpan Resources' Case Managers enjoy a retreat. They care for over 3,000 clients a year!*

## CASE MANAGEMENT

LifeSpan Resources serves as the single entry point into a variety of supportive services for older adults and individuals with disabilities of any age. Our case managers identify needs, link clients with home and community-based services, and create person-centered care plans - all so that the individual may remain living independently.

3,428 clients received Case Management for a total of 44,975 hours of service provided.



## IN-HOME SERVICES

In-home services include Attendant Care, Home-Delivered Meals, Respite Care, Adult Day Program, Home Health Aide, Transportation, Home Modifications, Adaptive Aids and Devices and other supports to help individuals in their homes remain independent.

**187,290 units of In-Home services were provided.**



## COMMUNITY-BASED CARE TRANSITION PROGRAM

LifeSpan Resources partners with an Indiana Managed Care Organization, to provide care transition services to their Hoosier Care Connect program members who are at high risk of readmission to the hospital. Our Managed Care Options Counselors conduct face-to-face in-home assessments, work closely with nurse case managers, educate patients about the benefits of the health plan and refer them to community resources. LifeSpan Resources is now offering this service to commercial members of this Indiana health plan company as well.



**171 patients received Care Transition services**

## FAMILY CAREGIVER PROGRAM

This amazing program connects caregivers to community resources particular to their caregiver needs. It includes Respite Care, Caregiver Education and other supportive services.

**6,972 units of service were provided for Family Caregivers.**

“

*I have relied on LifeSpan Resources and my awesome case manager, Colette, for services such as meal delivery and access to medical support. I never imagined they could help me find a solution to feeling so alone and isolated from my family and friends during the pandemic!*

– Ms. N, Client



## LEGAL SERVICES

Our agency provides an attorney for legal assistance to persons age 60 and over.

**608 hours of Legal Services were provided.**



*Pat Amos, site volunteer, leading chair exercises at Bacala Center.*



## NUTRITION PROGRAM

LifeSpan Resources Meals to Go! program provides weekly delivery of 7-meal boxes to homebound, older adults and individuals with disabilities. Meals are planned by a registered dietician to be well balanced and tasty; and provide 1/3 of the daily dietary requirements. Masterson's of Louisville, Kentucky, is our caterer for this program; their drivers also deliver the meals.

70,581 meals were provided through Meals to Go!

Meals  
to  
Go!



*"Meals to Go! helps me by providing a balanced diet and a hot meal I can warm up in the microwave."*

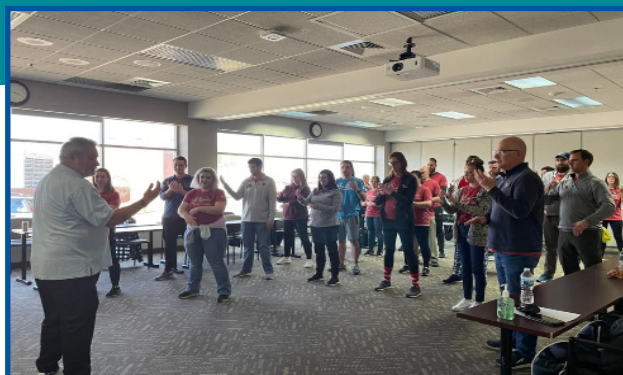
*— Mr. G, Meals to Go! client*



## PREVENTATIVE HEALTH

Monthly health screenings, twice monthly nutrition education programs and a host of socialization activities, along with evidence-based wellness programs are offered throughout the year at our congregate centers and other community partnership locations.

97,977 contacts were made in the congregate sites and sent to the homebound Meals To Go clientele including: nutrition education, evidence based wellness programs, socialization and game activities, music, art and other informational programs.



*Rick Haines, Joe Rhoads Congregate Site Manager, teaches Tai Chi to the 2022 LSI Discover Class.*



*Congregate clients at Joe Rhoads Center get fancy on Hat Day.*

## CONGREGATE NUTRITION

Our six congregate nutrition centers fully reopened post pandemic to enthusiastic participants. Congregate centers offer a daily hot lunch, socialization activities and games, evidence-based wellness programs and nutrition education.

27,396 congregate meals were provided



## TRANSPORTATION

We offer several transportation programs including medical and social transportation. All vehicles are equipped to transport individuals in wheelchairs safely and comfortably. All drivers are background checked and drug and alcohol tested, CPR and first aid certified and trained in safe transport. They are the most caring drivers – offering door-through-door assistance and safe delivery of clients to and from their destinations.

7,603 medical trips were provided.  
10,400 social trips were provided.

### Rides to Go!

Rides To Meet Your Needs

“

“Using LifeSpan Resources’ Rides to Go! transportation service eased my stress of caregiving. They provide care, concern, and safety for us.”  
– Ms. E, Caregiver



Sallie Jo Tomes  
Congregate Site Volunteer



## VOLUNTEER PROGRAM

At LifeSpan Resources, we welcome and love our volunteers. They help us in many ways year round including:

- Administrative office tasks
- Medicare counseling
- Congregate meal site servers
- Senior Games Scorekeepers and meals servers
- Voice and Vino ambassadors
- Board of Directors and Advisory Council membership
- Angel Tree deliveries
- And more!

136 Volunteers performed 5,434 hours of service

## DEMENTIA FRIENDS

LifeSpan Resources offers the Dementia Friends workshops, which are designed to advance the education and awareness of dementia. The program also aims to reduce the stigma associated with the disease and create community environments that are welcoming and conducive for those living with dementia. Dementia Friends One-Hour Workshops are offered FREE to community and church groups!

101 Dementia Friends made



Dementia Friends  
Workshop  
Participants



# VOICE and VINO

season 5

LIFESPAN RESOURCES  
ANNUAL  
GALA



October 25, 2022



# Voice & Vino 2022 Sponsors

## TITLE

Caesars Southern Indiana

## PLATINUM

Dr. Black's Eye Associates  
CLLB Law  
Cadella's Keepsakes  
Friends of Dr. Mindy Gunn  
German American Bank  
Louisville Iron Works  
MAC Construction  
Robertson Crushed Stone  
Timmel & Associates

## GOLD

Brookstone Financial  
Hosparus Health  
Jacobi, Toombs & Lanz

## SILVER

Benton & Associates  
Black Diamond Pest Control  
Caesars Foundation of Floyd Co.  
Cardinal Carryor  
Ed Clere – State Representative  
Edward Jones – Greg Nash  
Donna Ennis  
Fox Law Offices  
Friends of Treva Hodges  
Ruth Heideman  
Ivy Tech Community College  
Libs Paving Co.  
LL&A Interior Design

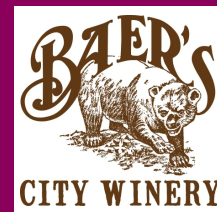
Mathes Pharmacy  
Masterson's Catering  
The Marketing Company  
The Mansion on Main  
Ohio Valley Home Health  
Rob & Jennie Olmstead  
Pediatric Plus Home Healthcare  
Retailers Supply  
Rotary Club – Salem, IN  
Samtec  
Schmitt Furniture  
The Sprigler Company  
TJ & Jan Sprigler  
Underproduction Multimedia  
St. Croix Hospice

## FRIENDS OF

Applegate Fifer Pulliam  
Jonathan Belden  
City of New Albany  
Clark Co. Democrats  
DMLO CPA's  
Duke Energy  
First Harrison Bank  
Foundation Risk Partners  
Ivy Tech Community College

Josh Hillman  
Indiana American Water  
L&D Mail Masters  
McCrite Milling  
New Washington State Bank  
Outward Bound Support Services  
Owen Funeral Home  
Temco Roofing & Construction  
Westmoreland Medical

## WINERIES & BREWERIES



For more information and photos, visit: [www.lsr14.org/voice-and-vino-html](http://www.lsr14.org/voice-and-vino-html)

To watch the 2022 Season 5 of Voice and Vino at the Casino, check out LifeSpan Resources' YouTube channel.



## LifeSpan Resources' 36<sup>th</sup> Annual Senior Games

June 6 - 10, 2022

*This year's theme, "Surfin' Seniors," included everything Hawaiian, from hula skirts and leis, to pineapple door prizes at closing ceremonies.*

*2022 was the first time post-COVID that we were able to gather in-person, indoors and include all our favorite events. This year we even added golf and brought back the vendor fair.*



**2022 found our "Surfin' Seniors" having a great time!**

Senior Games Participants: 132 | Nursing Home Games: 16

**TOTAL Participants: 148**

Senior Games Gang Members: 94

“

*LifeSpan Resources is just an awesome resource and partner. Through activities such as the Senior Games, they work so hard each day to ensure our area seniors stay active, doing everything they can in life, and keeping that little competitive fire alive inside of them.*

*— Ms. B, sponsor for Senior Games.*



# Senior Games 2022 Sponsors

## *PLATINUM*

Senior Games Gang  
Masterson's Catering  
Hellenic Senior Living  
Timmel & Associates

## *DIAMOND*

Kaiser Home Support Services

## *GOLD*

State Representative Ed Clere  
Brightwell Behavioral Health  
Newcomer Cremations, Funerals  
and Receptions  
Guardian Medical Monitoring  
Mathes Pharmacy  
Ohio Valley Home Health

Carefirst Rehab  
Holsman Physical Therapy &  
Rehab  
Villas of Guerin Woods  
Humana  
Communicare  
Westminster Village

## *SILVER*

Adaptive Hospice  
Amedysis Hospice  
Baptist Health Floyd  
Bennett Place  
Trilogy Health Services  
Clark Memorial Hospital

Caesars Southern Indiana  
Visiting Angels  
Elder Advisers  
Caregiver Homes  
Naville & Seabrook Funeral Home

## *IN KIND*

Frederick's Blackiston Bowl  
Knights of Columbus – New Albany  
Best Stamp Co & Sign Design  
Brightwell Behavioral Health  
City of Charlestown  
City of New Albany  
Floyd County Parks & Recreation

Floyd County YMCA  
Trilogy Health Services  
Masterson's Catering  
NARFE  
Pilot Club  
Westminster Village

## **Join “THE GANG!”**

The Senior Games Gang is LifeSpan Resources membership program for area adults age 55+. The program offers an outlet for socialization and friendship development plus health and wellness activities. Members receive free registration in the upcoming Senior Games and six special “Member-Only” events throughout the year.



For more information, contact Melissa Richardson, Director of Development at 812.206.7960.

# FINANCIALS

## FISCAL YEAR 2022

(July 1, 2021—June 30, 2022)

### INCOME

Contract/Program Income	\$7,222,148	93.29%
Grant Income	\$251,928	3.25%
Donations	\$47,828	0.62%
In-Kind Income	\$275,460	3.56%
Fundraising Income	\$172,129	2.22%
Miscellaneous Income	(\$227,735)	-2.94%
<b>TOTAL</b>	<b>\$7,741,758</b>	<b>100.00%</b>

### Expenditures

• Information & Assistance	\$21,241
• Transportation	\$624,625
• Medicaid Transportation	\$313,396
• Case Management	\$698,649
• Options Counseling	\$319,678
• In-Home Services	\$555,246
• Medicaid Waiver	\$2,258,941
• Legal Services	\$42,860
• Health Screenings/Education	\$29,846
• Ombudsman	\$48,534
• Congregate Meals	\$607,022
• Meals To Go	\$585,683
• Administration	\$237,717
• Fundraising	\$63,806
• Family Caregiver	\$297,186
• Senior Health Ins. Asst. Program	\$16,700
• Anthem	\$10,292
• COVID-19 Related	\$174,423
• Other	\$353,512
<b>TOTAL</b>	<b>\$7,259,357</b>

### Balance Sheet

#### ASSETS:

Cash and Grant Receivable	\$7,441,202
Medicaid Receivable	\$26,368
Other Assets	\$249,011
Fixed Assets	\$663,980
<b>TOTAL ASSETS</b>	<b>\$8,380,560</b>

#### LIABILITIES:

Accounts Payable	\$137,016
Payroll Withholdings	\$855
Accrued Expenses	\$249,674
<b>TOTAL LIABILITIES</b>	<b>\$387,545</b>

#### NET ASSETS:

Temporarily Restricted	\$134,759
Unrestricted	\$7,663,381
Unrestricted Assets	\$3,194,876
<b>TOTAL NET ASSETS</b>	<b>\$7,993,015</b>

<b>TOTAL LIABILITIES &amp; NET ASSETS</b>	<b>\$8,380,560</b>
---	--------------------



## ORGANIZATIONAL DONORS

Adaptive Hospice  
 Amazon Smile Program  
 Amedysis Hospice  
 American Legion Post 335  
 Applegate Fifer Pulliam  
 Atlas Technical Consultants  
 Baer City Winery  
 Baptist Health Floyd  
 Bennett Place  
 Benton & Associates  
 Best Stamp Co & Sign Design  
 Best Vineyards  
 Black Diamond Pest Control  
 Brightwell Behavioral Health  
 Brookstone Financial  
 Cadella's Keepsakes  
 Caesars Foundation of Floyd Co.  
 Caesars Southern Indiana  
 Cardinal Carryor  
 Carefirst Rehab  
 Caregiver Homes  
 Charlestown Development, LLC  
 Chick-Fil-A Jeffersonville  
 City of Charlestown  
 City of New Albany  
 City of New Albany  
 Clark Co. Democrats  
 Clark Memorial Hospital  
 CLLB Law  
 Communicare  
 Culbertson Home for Old Ladies  
 Dalton Brown Restoration & Construction  
 DMLO CPA's  
 Dogwood Inn Kennel & Pet Services  
 Dr. Black's Eye Associates  
 Duke Energy  
 Ed Clere – State Representative  
 Edward Jones – Greg Nash  
 Elder Advisers  
 First Harrison Bank  
 Floyd County Parks & Recreation  
 Floyd County YMCA  
 Floyd Memorial Foundation  
 Foundation Risk Partners  
 Fox Law Offices

Frederick's Blackiston Bowl  
 Friends of Dr. Mindy Gunn  
 Friends of Treva Hodges  
 German American Bank  
 Guardian Medical Monitoring  
 Heil's Auction Service  
 Hellenic Senior Living  
 Holsman Physical Therapy & Rehab  
 Hosparus Health  
 Huber's Preferred Meats  
 Humana  
 Hunter's Ridge Winery  
 Indiana American Water  
 Indiana United Way State Employees Comm. Campaign  
 Insty Prints/Signs Now  
 Ivy Tech Community College  
 Jacobi Sales  
 Jacobi, Toombs & Lanz  
 Jason Wade Insurance  
 K9K Solutions, LLC  
 Kaiser Home Support Services  
 Karen Estes, Inc.  
 Knights of Columbus – New Albany  
 Knights of Columbus Ladies Aux. - Jeffersonville  
 Kreative Cut  
 Kroger  
 L&D Mail Masters  
 Lambs Heating & Air Conditioning  
 Libs Paving Co.  
 Little Caesars of Charlestown  
 LL&A Interior Design  
 Louisville Iron Works  
 MAC Construction  
 MAD Productions LLC  
 Masterson's Catering  
 Mathes Pharmacy  
 McCrite Consulting  
 McCrite Milling  
 Mike Baumann Indiana Farm Bureau  
 NARFE  
 Naville & Seabrook Funeral Home  
 New Washington State Bank

Newcomer Cremations, Funerals and Receptions  
 Ohio Valley Home Health  
 Old 502 Winery  
 Outward Bound Support Services  
 Owen Funeral Home  
 Pediatric Plus Home Healthcare  
 Pilot Club  
 Richard Poe Family Dentistry  
 Rotary Club – Salem, IN  
 Salem Veterinary Services  
 Samtec  
 Schmitt Furniture  
 Serenity Smile Care, LLC  
 Shear Perfection Salon  
 SIR Security  
 SMC Benefits Solutions  
 St. Croix Hospice  
 Stay at Home Care  
 TC1 Group  
 Temco Roofing & Construction  
 The Mansion on Main/  
 Bridgepointe Gardens  
 The Marketing Company  
 The Monarchs  
 The Sprigler Company  
 Theresa Lamb State Farm  
 Timmel & Associates  
 Trilogy Health Services  
 Underproduction Multi-Media  
 Union Chapel Christian Church  
 United Consulting  
 Villas of Guerin Woods  
 Visiting Angels  
 VNA Health at Home  
 Westminster Village  
 Westmoreland Medical  
 Westmoreland Pharmacy

# INDIVIDUAL DONORS

Lisa Abney  
Celina Acosta  
Jamie Acosta  
Theresa Adams  
Annette Agan  
Jordan Agan  
Dr. Eddie Apenbring  
Betty Applegate  
Laverne Ashabranner  
Maryetta Austin  
Dr. Deepak Azad  
Joseph Bailey  
Larry "TC" Baker  
John Balchunas  
Christi Baldwin  
Gregory Ball  
Ann Barnett  
Mazie Baumann  
Dorothy Beckman  
Jonathan Belden  
Pamela Bennett Martin  
Mike & Ann Bennett  
James & Janet Bischoff  
Tamara Black  
Brad & Tami Black  
Kara Blake  
Chrystal Boisvert  
James & Tana Bolus  
Chris & Lisa Bottorff  
Sandy Bragg  
Judith Brashear  
Erin McCartin Braune  
Richard & Rita Brier  
Paul & Sandy Briles  
Brian Brinkworth  
Robert Brooks  
Adrian Brown  
Melissa Popp Brown Zirnheld  
Martha Brumit  
Janice Buchanan  
Andrea Burch  
Brittany Bush  
Doyle Bussey  
Beverly Cairnes  
Rita Campbell  
Mary Cardwell  
Penny Carroll

Ann Carruthers  
Michael Caudill  
Michelle Churchman  
Diane Clark  
Danise Clark  
Pam Clark  
Rob & Lora Clark  
Terrence Cody  
Rev. Dr. Albert Cole  
Susan Collins  
Kathy Combs  
Amanda Conrad  
Christy Conrad  
Roger & Sherry Cookson  
Dora Cornett  
Martha Cox  
Sandra Craig  
Myra Craig  
Hope Crail  
Sandra Crawford  
Tim Crawford  
Barbara Crecelius  
Rebecca Creek  
Patty Cress  
Rhonda Croan  
Robin Cross  
Leslie Curry  
Laura Dabney  
Felicia Daniels  
Mike Dankovich  
Glen Day  
Patricia DeChurch  
Chelsi Dennis  
Mindy Dewees  
Karen DeWilligen  
Alice Dewitt  
Kimberly Dierking  
John Doyle  
Doug Drake  
Rick Dresselhaus  
Amy Drury  
Barbara Duncan  
Jill Duvall  
Robert Dziatkowski  
Stacy Eads  
Leesa Eason  
Kenneth Eddy

Malia Edmonds  
Annemarie Eickholtz  
John & Beverly Eisenmenger  
Mary Lee Eldridge  
Patricia Elias  
Paul Elliott  
Kristin Ems  
Donna Ennis  
Jerri & Chelsie Ettel  
Katherine Eversole  
Erica Ewen  
The Zoeller Family  
Anna Farar  
Jerry Finn  
Tonya Fischer  
Cheryl Fisher  
Steve & Elena Fitzpatrick  
Josette Fitzpatrick  
Gerri Flanagan  
Marianne Fleming  
Cari Floyd  
Mary Alice Fortener  
Timothy & Barbara Frieberger  
Matt Fyfe  
Mayor Jeff Gahan  
Susanne Gahan  
Alma Garcia  
Jen Garcia Carraro  
Barbara Sue Gardner  
Sharon Gardner  
Vernon Gatton  
Linda Lou Geary  
Tom & Judy Gettelfinger  
Becky Giles  
Bob Gilewski  
Jennifer Gill  
Gary & Ruth Gilmore  
Alyssa Gohn  
James Goldman  
Dorothea Gomez  
Jessica Goodman  
Evelyn Gray  
Angie Gray  
Dan & Sarah Griffin  
Audranel Grittitts  
Jackie Grubbs  
Ruth Gullion



# INDIVIDUAL DONORS

Dr. Malinda Gunn  
 Robert Gunn  
 Linda & Natalia Haag  
 Dian Hackel  
 Mary Hadorn  
 James Hagerty  
 Jeanie Hall  
 Carolyn Hall  
 Carolyn Hall, OD  
 Joe Happel  
 Donnie Happel  
 Victoria Harpe  
 Sarah Harper  
 Alma Harris  
 Angus & Malinda Hart  
 Melanie Hartlage  
 Eunice Hasselbring  
 Pam Hawkins  
 Ruth Heideman  
 Leslie Helsel  
 Cary Hendrix  
 Michelle Henry  
 Ralph Henshaw  
 Victoria Hensley  
 Roni Hester  
 Josh Hillman  
 Mayor Treva Hodges  
 Sarah Hoerter  
 Mary Holz  
 Linda Hornung  
 Carl & Tracy Huber  
 Bob Hublar  
 Debra Hublar  
 Bobby Hughes  
 Caroline Hughes  
 Royce & Barbara Hunt  
 Marlene Isaacs  
 Michael Jackson  
 Noah Jacobs  
 Becky Jaenichen  
 Barry James  
 Jessica James  
 Janet Jenkins  
 Pearl Jenks  
 Mike & Lisa Johnson  
 Angie Johnson  
 Angela Johnson

Angie Johnson  
 Christy Carver Jones  
 Dr. Curtis Jordan  
 Deborah Julius  
 Angela Kaiser  
 Emily Kasey  
 Andrew Katt  
 Susan Katt  
 Dr. Natalie Katt  
 Jennifer Kellems  
 Dr. Kellems  
 Norma Keller  
 Ellen Kelley  
 Valerie Kelly  
 Bob & Deena Klee hamer  
 Kristen Klee hamer  
 Marissa Knoebel  
 Lucy Koesters  
 Brandon Koetter  
 Allison Koetter  
 Marcia Koetter  
 Angie Koopman  
 Doug & Shannon Kraft  
 Eric Lancaster  
 Jeanne Landrum  
 Stephanie Lashbrooks  
 Karen Lawson  
 Jean Lawson  
 Rick Casteel & Leslie Meek  
 Alisa Lewellen  
 Bryant Lewis  
 Richard Libs  
 Jessica Lincoln  
 Sara Colvin Lopesilvero  
 Daisy Lucio  
 Dustin Lynch  
 Travis & Terra Mahan  
 Mark Maraman  
 Angela Marino  
 Charlie Marking  
 Eric Martin  
 Julia Masterson  
 Jeanne Maxey  
 Diana McAllister  
 Erica McBride  
 Zach McCrite  
 Marianne McCullough

James McCullough  
 Jamie & Dena McCurdy  
 Kelly McDonough  
 Colleen McKain  
 Charles & Anita McMonigle  
 Michele McQuigg  
 Ben Meeks  
 Marianne Meisel  
 Sandra Messer-Harold  
 Myra Michaelis  
 Martha Miller  
 Jennifer Miller  
 Marcia Miller  
 Kathy Miller  
 Amelia Minks  
 Scott Minton  
 Debbie Missi  
 Tanya Mitchell  
 Larry Moch  
 Nancy Montgomery  
 Dannyell Murphy  
 Patty Murray  
 Greg & Christy Nash  
 Stephen Naville  
 Tim & Julie Naville  
 James Nett  
 Janne Newland  
 Chanda Nicholson  
 Brenda Nickles  
 Jesse Niehaus  
 Rachel Nolan  
 Nick Nolan  
 Frederick Nolen  
 Terry Northern  
 Rob & Jennie Olmstead  
 Justin Ott  
 Benita Pate  
 Barbara Peay  
 James Peckham  
 Jessica Phillips  
 Jean Pittman  
 Dena Pollard  
 Jessica Pooler  
 Berry Popp  
 Beth Preher  
 Pat Priddy  
 Carrie Prince

## INDIVIDUAL DONORS

Drs. Kris & Jessica Pugh  
Kristy Purlee  
Jill Ramboz  
Florence Rayman  
Jessica Rayman  
William Reedy  
Lynn Reker  
Marcus & Jacqueline Renn  
Marty Reynolds  
Jamie & Melissa Richardson  
Dawn Riddle  
Donna Riley  
Sara Ring  
Annette Roberts  
Charlie & Jill Robertson  
Kelly Robertson  
Sherry Robertson  
Maureen Robinson  
Joyce Romines  
Mary Rone  
Chandra Roper  
Patsy Rose  
Mauria Rowan  
Trent Rufing  
Barbara Sanders  
Connie Sanford  
Carroll & Joyce Schafer  
Lisa Schaffer  
James Schellenberger  
Charlie Schladland  
Marcia Schmidt  
Heather Schrimp  
Carolyn Schueler  
Wava Schumacher  
Christopher Schwaniger  
Tom & Marilyn Scott  
Henry Seibert  
Mila Selimovic  
Shirley Senn  
Mike & Kit Shearer  
Brandi Sherrell  
Mark & Candace Shireman  
Vonda Smith

Brian Smith  
Devin Hillsdon Smith  
Laurie Spaulding  
Pamela Speagle  
Linda Spears  
Brad Spencer  
TJ & Jan Sprigler  
Adrienne Sprigler  
Brent Sprigler  
Mary Sprigler  
Philip Stanley  
Cindy Stephens  
Dana Stivers  
Brandon Strange  
Christopher Stroud  
Michele Sullivan  
Sherry Tabor  
Stacy Tainsh  
Rob Tate  
Lucas Taylor  
Joyce Thomas  
Michelle Thomas  
Jim & Dot Thomas  
Deborah Thompson  
Rev. Dr. Tony Toran  
Charity Travi  
Sarah Trowbridge  
Julie Trueblood  
Cherry Trumbo  
Lori Unruh  
Travis Unruh  
Amanda VanHoose  
Lori Varela  
G. Wayne Voyles  
Joe & Mary Wafford  
Lauren Wagoner  
Jude & Betty Walter  
Patty Walters  
William Ware  
Victoria Waterbury  
Susan Wathen  
Edward Weber  
Stephen Weber

Jen Weidner  
Brenda Wells  
Jan Weyer  
Ishmael White  
Marlana White  
Carol Wilkerson  
Bruce Williams  
Julia Williams  
Stephanie Wilson  
Cody Winchell  
Jenny Works  
Jennifer Works  
Mandy Wright  
Lori Wyatt  
Steve Wynn  
Joy Yeager  
Travis & Amber Young  
Judith Youngs  
Jacob Yunker  
Tammy Zehnder  
Sunnye Zoeller-Stumler



## GRANT FUNDING RECEIVED — *Thank You!*

**Anthem/IAAAA Foundation “Produce for Better Health” Grant** – funding for a new research program that will provide fresh produce to Nutrition clients and track their health outcomes.

**Metro United Way** – funds supporting our Rides to Go! Transportation program.

**City of New Albany Community Development Block Grant** –funding to support transportation needs of New Albany residents.

**City of New Albany American Rescue Fund Grant** –funding to support those in Floyd County needing meals on wheels through our Meals to Go! program.

**Community Foundation of Southern Indiana Capacity Building Grant** – provides funds for technology upgrades in our case management department.

**Duke Energy** – emergency funding to help offset rising fuel costs for our Rides to Go! program.

**Federal Transit Administration Enhanced Mobility of Seniors and Individuals with Disabilities/TARC** – funds provided to purchase four new Ford Transit wheelchair-accessible vehicles for our Rides to Go! program, plus funding to help upgrade our radio system from analog to digital.

**Floyd Memorial Foundation** – funds to purchase and implement Bingocize, a new evidence-based health and wellness program for our congregate participants.

**Glick Philanthropies** – funding to help with vehicle match requirement to purchase a new wheelchair accessible van.



**Anthem**



INDIANA ASSOCIATION  
of AREA AGENCIES on AGING



# ABOUT LIFESPAN RESOURCES

## OUR MISSION

*Promoting Independent Living For People of All Ages*

## OUR VISION

“LifeSpan Resources will be the key organization in Southern Indiana supporting independence and quality of life for all persons through advocacy, education and client centered services.”

Clients include the elderly and persons with disabilities of any age. Some of our services include home delivered meals (Meals to Go!), Transportation (Rides To Go!), and numerous in-home services. (Please visit our web site for more information on any of these services.)

Our service area includes Clark, Floyd, Harrison and Scott counties. LifeSpan Resources is one of 15 state designated Area Agencies on Aging in the state of Indiana. We are funded by state, federal and local sources, in addition to private and community foundation grants, United Way, client and private citizen donations and fundraising events. In addition, we rely on volunteers to help in many of our programs.

To access information about services and supports, or to volunteer, please contact LifeSpan Resources at 812-948-8330 (toll free: 888-948-8330), or email us at: [info@lsr14.org](mailto:info@lsr14.org).

## LIFESPAN RESOURCES' CONGREGATE CENTERS

These centers offer a nutritionally balanced lunch each weekday. Daily programs include health and wellness programs, nutrition education and many fun socialization activities including arts and crafts, cards, games and puzzles, bingo, music and much more. Registration is required (free) and donations accepted. See our website for more information.

### **Clark County**

Yellowwood Terrace  
2100 Greentree North, Clarksville, IN 47129

### **Harrison County**

Joe Rhoads Senior Center  
123 S. Mulberry Street, Corydon, IN 47122

### **Floyd County**

Mark Elrod Towers  
1 Wolfe Trace, New Albany, IN 47150

### **Peggy's Place**

1730 Audubon Place, New Albany, IN 47150

### **Scott County**

Bacala Senior Center  
69 E. Wardell Street, Scottsburg, IN 47170